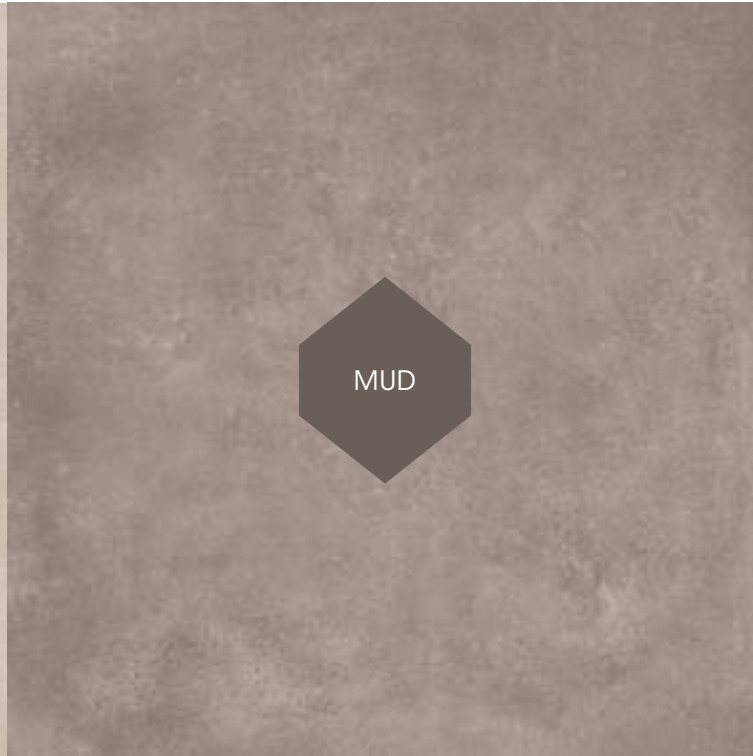


NATIVE

—

*warm colors*



NATIVE

—

*cold colors*





Floor *Silver* 80x80 - Outdoor 20 mm

## PAVIMENTI PER ESTERNO - Soluzioni di posa

Outdoor laying solutions / Possibilités de montage pour sol d'extérieur / Verlegesysteme für Terrassenplatten / Soluciones de colocación para suelo exterior / Варианты для наружной укладки пола / 户外地面的铺贴解决方案





**SPESSORE**  
Thickness / Épaisseur / Stärke /  
Espesor / Толщина / 厚度

**10 MM**

**R10 gruppo A** indoor  
**R11 gruppo B** outdoor

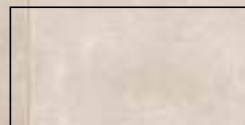
**FORMATI**  
Sizes / Formats / Formate /  
Formatos / Форматы / 规格



**56770** / 80x180



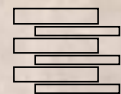
**56700** / 80x80  
**56690** / 80x80 - Outdoor  
**56790** / 80x80 - Outdoor 20mm



**56710** / 40x80



**56660** / 60x120

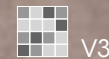


**56780 MOSAICO T6** / 30x30



**55650** / 60x60

# SAND



**SPESSORE**  
Thickness / Épaisseur / Stärke /  
Espesor / Толщина / 厚度

**10 MM**

**R10 gruppo A** indoor  
**R11 gruppo B** outdoor

**FORMATI**  
Sizes / Formats / Formate /  
Formatos / Форматы / 规格



**56772** / 80x180



**56702** / 80x80  
**56692** / 80x80 - Outdoor  
**56792** / 80x80 - Outdoor 20mm



**56712** / 40x80



**56662** / 60x120



**56782 MOSAICO T6** / 30x30



**55652** / 60x60

# MUD



# SILVER

**SPESSORE**  
Thickness / Épaisseur / Stärke /  
Espesor / Толщина / 厚度

## 10 MM

**R10 gruppo A** indoor  
**R11 gruppo B** outdoor

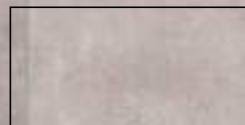
**FORMATI**  
Sizes / Formats / Formate /  
Formatos / Форматы / 规格



56771 / 80x180



56701 / 80x80  
56691 / 80x80 - Outdoor  
56791 / 80x80 - Outdoor 20mm



56711 / 40x80



56661 / 60x120



56781 MOSAICO T6 / 30x30



55651 / 60x60



# CONCRETE

**SPESSORE**  
Thickness / Épaisseur / Stärke /  
Espesor / Толщина / 厚度

## 10 MM

**R10 gruppo A** indoor  
**R11 gruppo B** outdoor

**FORMATI**  
Sizes / Formats / Formate /  
Formatos / Форматы / 规格



56773 / 80x180



56703 / 80x80  
56693 / 80x80 - Outdoor  
56793 / 80x80 - Outdoor 20mm



56713 / 40x80



56663 / 60x120



56783 MOSAICO T6 / 30x30

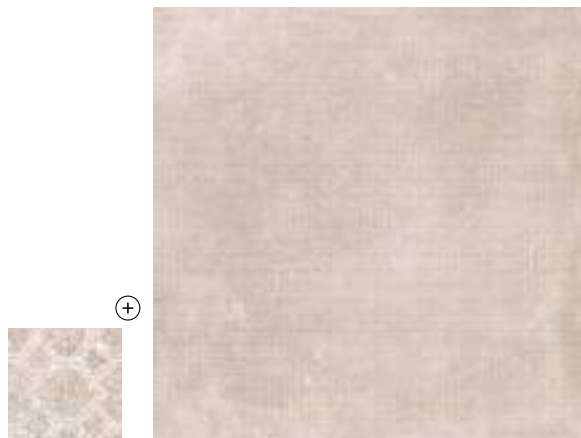


55653 / 60x60

## DECORI

Decors / Décorations / Verzierungen / Decoraciones / Украшения / 装饰

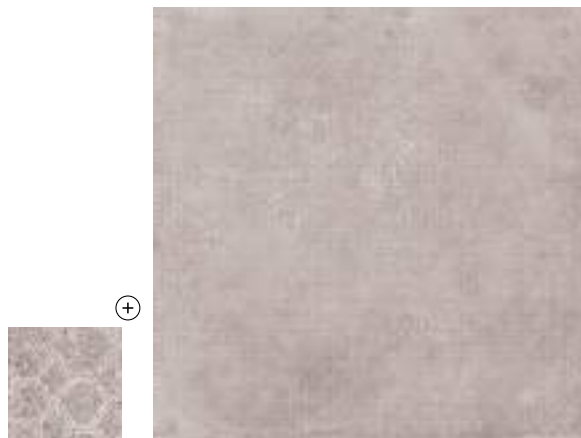
### TEXTURE 80x80



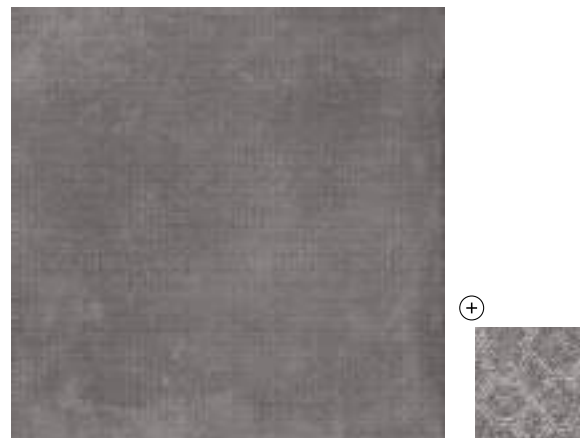
**56720** / Sand



**56722** / Mud



**56721** / Silver



**56723** / Concrete

## PEZZI SPECIALI

Floor special pieces and trims / Pieces especiales sol / Spezial bodenfliesen / Piezas especiales para pavimento / Изделия специальной формы для пола / 地面用特种件

|          | Battiscopa molato 8x80 | Gradone 80x32x4 | Gradone angolare 80x32x4           | Elemento ad "L" 80x32x4 | Gradone torelo (cm 2) 80x32 | Elemento ad "L" (cm 2) 80x32x4 | Profili ottone                              | Profili acciaio                             |
|----------|------------------------|-----------------|------------------------------------|-------------------------|-----------------------------|--------------------------------|---|---|
| SAND     | <b>ML56700</b>         | <b>56730</b>    | SX <b>56750</b><br>DX <b>56740</b> | <b>56760</b>            | <b>56670</b>                | <b>56680</b>                   | <b>119863</b> 1x80<br><b>26231</b> 1x60     | <b>119862</b> 1x80<br><b>26230</b> 1x60     |
| MUD      | <b>ML56702</b>         | <b>56732</b>    | SX <b>56752</b><br>DX <b>56742</b> | <b>56762</b>            | <b>56672</b>                | <b>56682</b>                   | <b>119861</b> 0,5x80<br><b>26236</b> 0,5x60 | <b>119860</b> 0,5x80<br><b>26235</b> 0,5x60 |
| SILVER   | <b>ML56701</b>         | <b>56731</b>    | SX <b>56751</b><br>DX <b>56741</b> | <b>56761</b>            | <b>56671</b>                | <b>56681</b>                   |   |   |
| CONCRETE | <b>ML56703</b>         | <b>56733</b>    | SX <b>56753</b><br>DX <b>56743</b> | <b>56763</b>            | <b>56673</b>                | <b>56683</b>                   |   |   |

Gradone 80x32x4

## TABELLA PESI E IMBALLI

Package weights / Poids emballages / Gewicht – verpackung / Pesos embalajes / Вес, упаковка / 包装重量

EN 14411/G Bia UGL

| FORMATO                        | PZ/SCAT | MQ/SCAT | KG/SCAT | SCAT/PAL | MQ/PAL | KG/PAL  |
|--------------------------------|---------|---------|---------|----------|--------|---------|
| Fondo 80x180                   | 2       | 2,880   | 64,80   | 18       | 51,84  | 1166,40 |
| Fondo/Texture 80x80            | 2       | 1,280   | 27,57   | 35       | 44,80  | 964,95  |
| Fondo 80x80 - 20mm             | 1       | 0,640   | 28,75   | 32       | 20,48  | 920,00  |
| Fondo 40x80                    | 3       | 0,960   | 20,74   | 56       | 53,76  | 1161,44 |
| Fondo 60x120                   | 2       | 1,440   | 29,95   | 21       | 30,24  | 628,99  |
| Fondo 60x60                    | 3       | 1,080   | 22,46   | 32       | 34,56  | 718,84  |
| Mosaico T6 30x30               | 4       | -       | 9,20    | -        | -      | -       |
| Battiscopa molato 8x80         | 10      | 8,00 ml | 15,00   | -        | -      | -       |
| Gradone 80x32x4                | 2       | 1,60 ml | 14,00   | -        | -      | -       |
| Gradone angolare DX/SX 80x32x4 | 1       | -       | 7,00    | -        | -      | -       |
| Elemento "L" 80x32x4           | 2       | 1,60 ml | 14,00   | -        | -      | -       |
| Gradone torelo (cm 2) 80x32    | 1       | -       | 7,00    | -        | -      | -       |
| Elemento "L" (cm 2) 80x32x4    | 1       | -       | 7,00    | -        | -      | -       |
| Profili metallo 0,5x80 / 1x80  | 6       | 4,80 ml | 3,00    | -        | -      | -       |
| Profili metallo 0,5x60 - 1x60  | 6       | 3,60 ml | 2,70    | -        | -      | -       |